

# Assessment of petroleum contamination at closed leak sites

## Petroleum Remediation Program

Minn. Stat. § 115.061, requires **immediate** reporting upon the discovery of a spill, leak, overfill, or other signs of a petroleum release to the environment by calling the Minnesota duty officer at **651-649-5451** or **1-800-422-0798**.

When petroleum contamination is reported at a closed leak site, the Minnesota Pollution Control Agency (MPCA) will request additional information. This information should include analytical data and a site map with sampling locations. The MPCA requests this information be submitted within 30 days of reporting the contamination to the Minnesota duty officer.

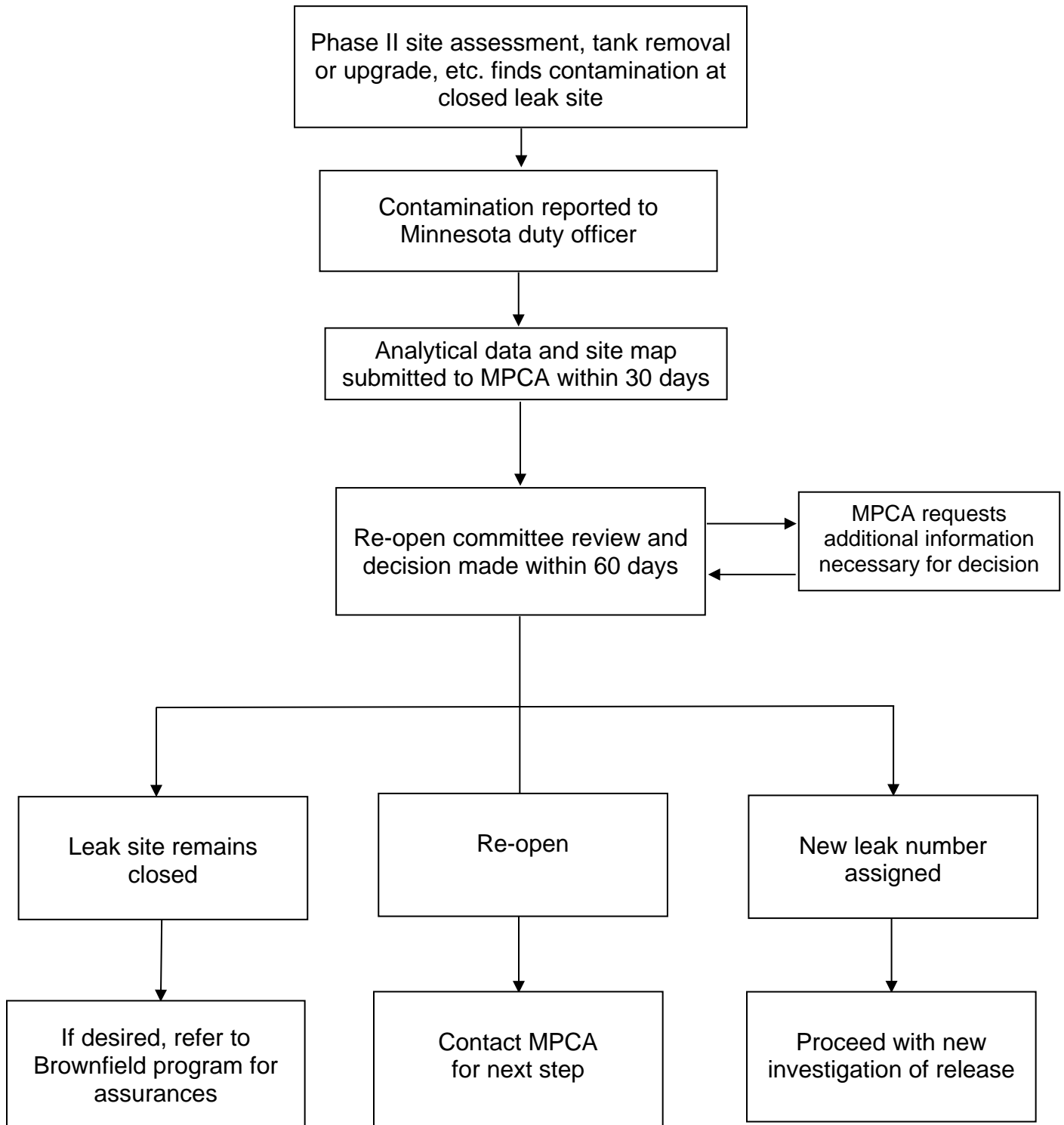
Upon receipt of this information, the MPCA will determine if the leak site will remain closed, be reopened, or if a new leak site will be assigned. The associated costs to obtain this information may be eligible for Petrofund reimbursement. The MPCA will make the determination within 60 days of receipt of site data. These determinations will be made by a committee consisting of Petroleum Remediation Program staff and supervisors, and not necessarily by staff formerly assigned to the closed leak site.

A leak site will likely remain closed if the levels of contamination found are lower than or similar to those previously detected at the closed site. For any written assurances for these sites, please contact the [Brownfield Program](#). A leak site may be reopened if free product is discovered that was not present at the time of site closure, if detected levels are higher than those previously reported at the closed site with no new source(s) present, if new program policy since the time of previous site closure requires additional investigation, or if new information provided indicates the need for additional MPCA oversight. A new leak site number may be assigned to the site if there is a new release, or a release from a new source.

If Petrofund reimbursement will be requested for costs related to soil removal, an excavation report should be completed and submitted to the MPCA. For any treatment of contaminated soil, regardless of reimbursement status, appropriate MPCA protocol regarding storage and treatment must be followed. Please refer to [Excavation of petroleum-contaminated soil and tank removal sampling](#) for information on excavation, and [General excavation report worksheet](#) for the excavation report form. Please submit [General excavation report worksheet](#) within 10 months from the date of soil excavation. Prior written MPCA approval is required for removal of volumes exceeding the amounts indicated in [Excavation of petroleum-contaminated soil and tank removal sampling](#).

For information concerning Petrofund reimbursement, please contact Minnesota Department of Commerce Petrofund at 651-539-1515 or 1-800-638-0418, or visit the [Petrofund](#) website.

# Assessment of petroleum contamination at closed leak sites



Reimbursement questions? Contact the [Petrofund](#) at 651-539-1515 or 1-800-638-0418.